

Salesforce Tower

Chicago, Illinois

CONSULTING FIRM
PLANNING EXAMPLE
2 FLOORS - MIDRISE
49,724 RSF

Hines

For free adjustments to this space plan, please contact
Michael Walker @ mwalker@spacelogik.com



Salesforce Tower

Chicago, Illinois

CONSULTING FIRM
2 FLOORS - MIDRISE

PROGRAM AREA	~USF	RECEPTION FLOOR		TYPICAL FLOOR		ALL FLOORS
PEOPLE						
Recption / Barrista	225	2		0	-	2
Private offices (interior)	120	10		10	-	20
Support stations	42	138		165	-	303
CONFERENCE / OPEN COLLABORATION						
12-person collaboration	250	0		1	-	1
10-person collaboration	170	5		4		9
4-person collaboration	100	3		3	-	6
2-person collaboration	48	2		9	-	11
4-person conference room	120	2		3	-	5
Phone rooms	48	2		2	-	4
SUPPORT						
Cafeteria	1100	1		1	-	2
Mail/Copy room	180	1		1	-	2
High density filing room	120	1		1	-	2
Coffee stations	90	-		1	-	1
Storage areas	200	1		1	-	2
Employee lockers	130	1		1		2
MDF	120	1		-	-	1
IDF	24	-		1	-	1
Print stations	90	1		2	-	3
Wellness room	120	1		1	-	2
Coat closets	24	4		5	-	9
RECEPTION SUITE						
Reception area	700	1		-	-	1
Guest lounge & beverage service	900	1		-	-	1
14-person conference room	500	1		-	-	1
10-person conference room	350	1		-	-	1
6-person conference room	220	1		-	-	1

SPACE METRICS	
RSF (2 floors):	49,724
Total employees:	325
RSF / employee:	153
Conference areas:	8
Conference seats:	50
Collaboration / Café areas:	32
Collaboration / Café seats:	256
Conf/Collab/Café Seats:	306
Conf/Collab/Café Seats / FTE:	1 / 1.06
Minimum secondary aisle:	48"
Minimum primary aisle:	72"

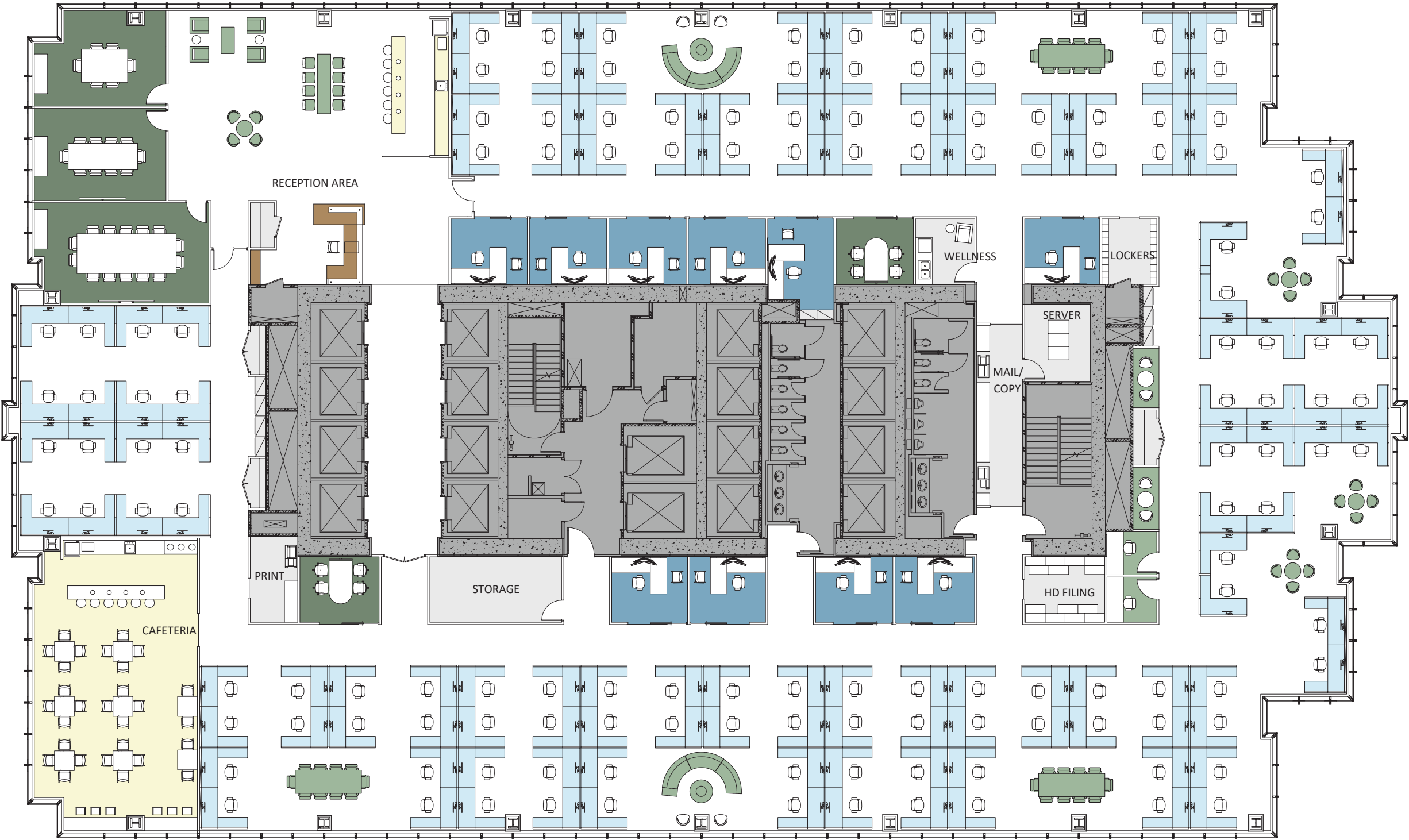
Salesforce Tower

Chicago, Illinois

CONSULTING FIRM
RECEPTION FLOOR
24,862 RSF

SPACE PROGRAM		
PEOPLE		
Reception / Barrista	1600 sf	2
Interior Office	120 sf	10
Workstations	42 sf	138
TOTAL PEOPLE:		150
CONFERENCE / COMMUNITY		
14-person conference rooms		1
10-person conference rooms		1
6-person conference rooms		1
4-person conference rooms		2
Phone rooms		2
Open collaboration areas		14
CONF/COMM AREAS:		21
CONF/COMM SEATS:		128
SUPPORT		
40-Person Cafeteria	1100 sf	1
Mail / Copy	200 sf	1
Storage	200 sf	1
Server / MDF	120 sf	1
Employee Lockers	130 sf	1
Print stations	100 sf	1
Wellness room	100 sf	1
HD Filing	120 sf	1
Open Filing	18 sf	2
Coats	18 sf	4
SUPPORT AREAS:		14

SPACE METRICS (floor)	
Floor RSF	24,862
RSF / FTE	166
Conf / Comm / Cafe Seats	168
Conf Seats / FTE Ratio	1.1 / 1
Minimum primary aisle	6 feet



Salesforce Tower

Chicago, Illinois

CONSULTING FIRM

TYPICAL FLOOR

24,862 RSF

SPACE PROGRAM			
PEOPLE			
Interior Offices	120 sf	10	
Workstations	42 sf	165	
TOTAL PEOPLE:		175	
CONFERENCE / COMMUNITY			
12-person collaboration areas		1	
10-person collaboration areas		4	
4-person collaboration areas		3	
2-person collaboration areas		9	
Phone rooms		2	
4-person conference rooms		3	
CONFERENCE AREAS:		22	
COLLABORATION SEATS:		96	
SUPPORT			
40-Person Cafeteria	1100 sf	1	
Mail / Copy	200 sf	1	
Coffee / Break	90	1	
Storage	200 sf	1	
IDF Closet	24 sf	1	
Employee Lockers	130 sf	1	
Print stations	100 sf	2	
Wellness room	100 sf	1	
HD Filing	120 sf	1	
Open Filing	18 sf	2	
Coats	18 sf	5	
SUPPORT AREAS:		17	
SPACE METRICS (floor)			
Floor RSF	24,862		
RSF / FTE	142		
Conf / Community / Cafe Seats	137		
Conf Seats / FTE Ratio	1 / 1.3		
Minimum primary aisle	6 feet		

