

# Salesforce Tower

Chicago, Illinois

CONSULTING FIRM  
PLANNING EXAMPLE  
1 FLOOR - MIDRISE  
24,862 RSF

Hines

For free adjustments to this space plan, please contact  
Michael Walker @ [mwalker@spacelogik.com](mailto:mwalker@spacelogik.com)



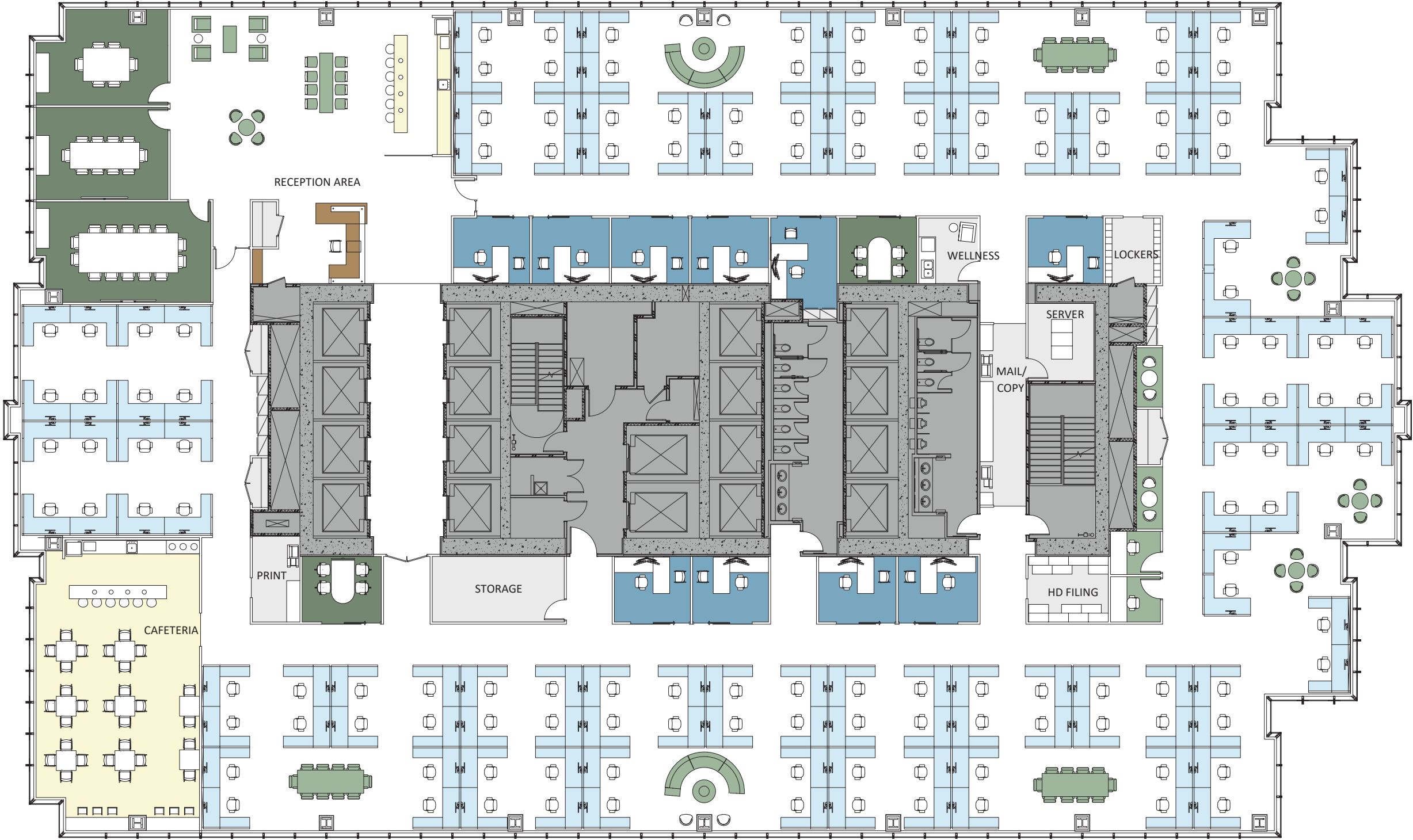
# Salesforce Tower

Chicago, Illinois

CONSULTING FIRM  
24,862 RSF

SPACE PROGRAM		
PEOPLE		
Reception / Barrista	1600 sf	2
Interior Office	120 sf	10
Workstations	42 sf	138
TOTAL PEOPLE:		150
CONFERENCE / COMMUNITY		
14-person conference rooms		1
10-person conference rooms		1
6-person conference rooms		1
4-person conference rooms		2
Phone rooms		2
Open collaboration areas		14
CONF/COMM AREAS:		21
CONF/COMM SEATS:		128
SUPPORT		
40-Person Cafeteria	1100 sf	1
Mail / Copy	200 sf	1
Storage	200 sf	1
Server / MDF	120 sf	1
Employee Lockers	130 sf	1
Print stations	100 sf	1
Wellness room	100 sf	1
HD Filing	120 sf	1
Open Filing	18 sf	2
Coats	18 sf	4
SUPPORT AREAS:		14

SPACE METRICS (floor)	
Floor RSF	24,862
RSF / FTE	166
Conf / Comm / Cafe Seats	168
Conf Seats / FTE Ratio	1.1 / 1
Minimum primary aisle	6 feet





# Salesforce Tower

Chicago, Illinois

CONSULTING FIRM  
24,862 RSF

SPACE PROGRAM			
PEOPLE			
Reception / Barrista	1200 sf	2	
Interior Office	120 sf	10	
Workstations	42 sf	138	
TOTAL PEOPLE:		150	
CONFERENCE / COMMUNITY			
14-person conference rooms		1	
10-person conference rooms		1	
6-person conference rooms		1	
4-person conference rooms		2	
Phone rooms		2	
Open collaboration areas		14	
CONF/COMM AREAS:		21	
CONF/COMM SEATS:		128	
SUPPORT			
40-Person Cafeteria	1000 sf	1	
Mail / Copy	200 sf	1	
Storage	200 sf	1	
Server / MDF	120 sf	1	
Employee Lockers	130 sf	1	
Print stations	100 sf	1	
Wellness room	100 sf	1	
HD Filing	120 sf	1	
Open Filing	18 sf	2	
Coats	18 sf	4	
SUPPORT AREAS:		14	

SPACE METRICS (floor)	
Floor RSF	24,862
RSF / FTE	166
Conf / Comm / Cafe Seats	168
Conf Seats / FTE Ratio	1.1 / 1
Minimum primary aisle	6 feet

