

# Salesforce Tower

Chicago, Illinois

LAW FIRM PLANNING EXAMPLE

2 FLOORS - HIGHRISE

TWO SIZED OFFICES

51,270 RSF

Hines

For free adjustments to this space plan, please contact  
Michael Walker @ [mwalker@spacelogik.com](mailto:mwalker@spacelogik.com)



# Salesforce Tower

Chicago, Illinois

LAW FIRM  
TWO SIZED OFFICES  
2 Floors - Highrise

PROGRAM AREA	~USF	RECEPTION FLOOR	TYPICAL FLOOR		ALL FLOORS
PEOPLE					
Partner offices (window)	225	11	15	-	26
Associate offices (window)	150	23	28	-	51
Associate offices (interior)	150	10	14	-	24
Support offices	100	4	4	-	8
Assistant stations	64	9	12	-	21
Support stations	36	6	6	-	12
Misc (reception, group areas, etc).	36	1	-	-	1
CONFERENCE					
10-person conference room	250	0	2	-	2
8-person conference room	220	1	1	-	2
6-person conference room	200	2	2	-	4
4-person conference room	120	0	2	-	2
4-person collaboration	100	0	3	-	3
SUPPORT					
High density filing	500	1	1	-	2
Mail/Copy room	180	0	1	-	1
Cafeteria	420	-	1	-	1
Coffee stations	80	1	1	-	2
Storage areas	180	1	1	-	2
MDF	220	1	-	-	1
IDF	80	-	1	-	1
Print stations	90	3	4	-	7
Wellness room	150	-	1	-	1
RECEPTION SUITE					
Reception area	600	1	-	-	1
Guest lounge & beverage service	700	1	-	-	1
20-person conference room	940	1	-	-	1
18-person conference room	700	-	-	-	-
14-person conference room	500	1	-	-	1
12-person conference room	460	1	-	-	1
10-person conference room	350	1	-	-	1
8-person conference room	320	-	-	-	-
6-person conference room	220	1	-	-	1
5-person conference room	220	-	-	-	-
Open collaboration	100	3	-	-	3
Kitchen / Catering	780	1	-	-	1
Beverage station	190	1	-	-	1
Coat closet (walk-in)	125	1	-	-	1

SPACE METRICS	
RSF (3 floors):	51,270
Window attorneys:	77
Total attorneys:	101
Total employees:	143
RSF / window attorney:	666
RSF / attorney:	508
RSF / employee:	359
Conference areas:	22
Conference seats:	142
Conference seats / attorney:	1.7 / 1
Conference seats / employee:	1.2 / 1
Minimum primary aisle:	72"

Salesforce Tower

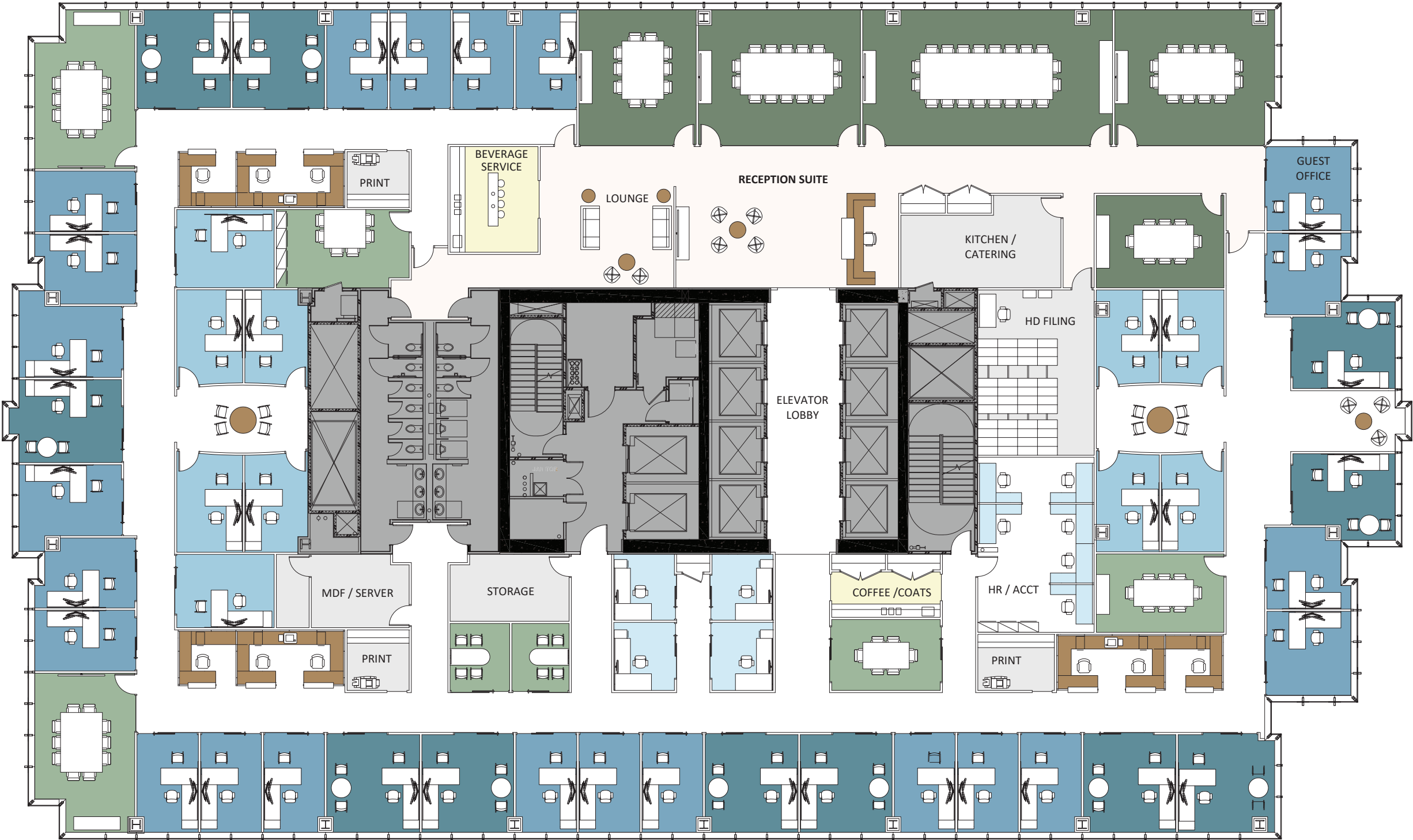
Chicago, Illinois

LAW FIRM

CONFERENCE FLOOR (25-50k RSF)

TWO SIZED OFFICES

SPACE PROGRAM		
PEOPLE		
Partner / window	225 sf	11
Associate / window	150 sf	23
Associate / interior	150 sf	10
Support offices	100 sf	4
Assistant stations	72 sf	9
Support stations	36 sf	6
Misc (reception, etc)	36 sf	1
TOTAL PEOPLE:		53
CONFERCING		
10-person conference rooms		2
8-person conference rooms		1
6-person conference rooms		2
4-person conference rooms		2
Open collaboration araes		3
CONFERENCE AREAS:		10
SUPPORT		
HD Filing	425 sf	1
Storage	200 sf	1
Kitchen / Catering	280 sf	1
Print stations	100 sf	3
Coffee station	90 sf	1
MDF room	220 sf	1
SUPPORT AREAS:		10
RECEPTION SUITE		
Reception area		1
Guest lounge / beverage service		1
20-person conference rooms		1
14-person conference room		1
12-person conference room		1
10-person conference room		1
6- person conference room		1
Coat closet		1





# Salesforce Tower

Chicago, Illinois

LAW FIRM  
TYPICAL ATTORNEY FLOOR  
TWO SIZED OFFICES

SPACE PROGRAM		
PEOPLE		
Partner offices	225 sf	15
Associate / window	150 sf	28
Associate / interior	150 sf	14
Support offices:	100 sf	4
Assistant stations	72 sf	12
Support stations	36 sf	6
TOTAL PEOPLE:		79
CONFERENCING		
10-person conference rooms		2
8-person conference rooms		2
6-person conference rooms		3
4-person conference rooms		2
Open collaboration areas		3
CONFERENCE AREAS:		12
SUPPORT		
HD Filing	400 sf	1
Mail / Copy	150 sf	1
Storage	200 sf	1
Cafeteria	400 sf	1
Coffee	130 sf	1
Print stations	100 sf	4
Wellness room	100 sf	1
IDF room	60 sf	1
SUPPORT AREAS:		11

SPACE METRICS (floor)	
Floor RSF	25,635
RSF / Attorney (window)	596
RSF / Attorney (total)	450
RSF / Employee	325
Minimum primary aisle	6 feet

