

Salesforce Tower

Chicago, Illinois

LAW FIRM PLANNING EXAMPLE

2 FLOORS - HIGHRISE

UNIVERSAL OFFICES

51,270 RSF

Hines

For free adjustments to this space plan, please contact
Michael Walker @ mwalker@spacelogik.com



Salesforce Tower

Chicago, Illinois

LAW FIRM
UNIVERSAL OFFICES
2 Floors - Highrise

PROGRAM AREA		FLOOR ONE	FLOOR TWO		ALL FLOORS
PEOPLE	~ USF				
Associate offices (window)	150	39	50		89
Associate offices (interior)	150	10	14		24
Support offices	100	4	4		8
Assistant stations	64	9	12		21
Support stations	36	6	6		12
Misc (reception, group areas, etc).	36	1	-		1
CONFERENCE					
10-person conference room	250	2	2		4
8-person conference room	220	2	2		4
6-person conference room	200	2	3		5
4-person conference room	120	2	2		4
4-person collaboration	100	2	3		5
SUPPORT					
High density filing	500	1	1		2
Mail/Copy room	180	1	1		3
Cafeteria	420	-	1		2
Coffee stations	80	1	1		3
Storage areas	180	1	1		3
MDF	220	1	-		1
IDF	80	-	1		2
Print stations	90	2	4		10
Wellness room	150	-	1		2
RECEPTION SUITE					
Reception area	1200	1	-		1
20-person board room	800	1	-		1
20-person conference room	940	-	-		-
18-person conference room	700	-	-		-
14-person conference room	500	1	-		1
12-person conference room	460	1	-		1
10-person conference room	350	1	-		1
8-person conference room	320	1	-		1
5-person conference room	220	-	-		1
Open collaboration	100	-	-		-
Kitchen / Catering	550	1	-		1
Visitor Office	360	1	-		1
Beverage station	190	1	-		1
Coat closet	40	1	-		1

SPACE METRICS	
RSF (2 floors):	51,270
Window attorneys:	89
Total attorneys:	113
Total employees:	154
RSF / window attorney:	576
RSF / attorney:	453
RSF / employee:	332
Conference areas:	31
Conference seats:	231
Conference seats / attorney:	2.0 / 1
Conference seats / employee:	1.5 / 1
Minimum primary aisle:	6 feet

Salesforce Tower

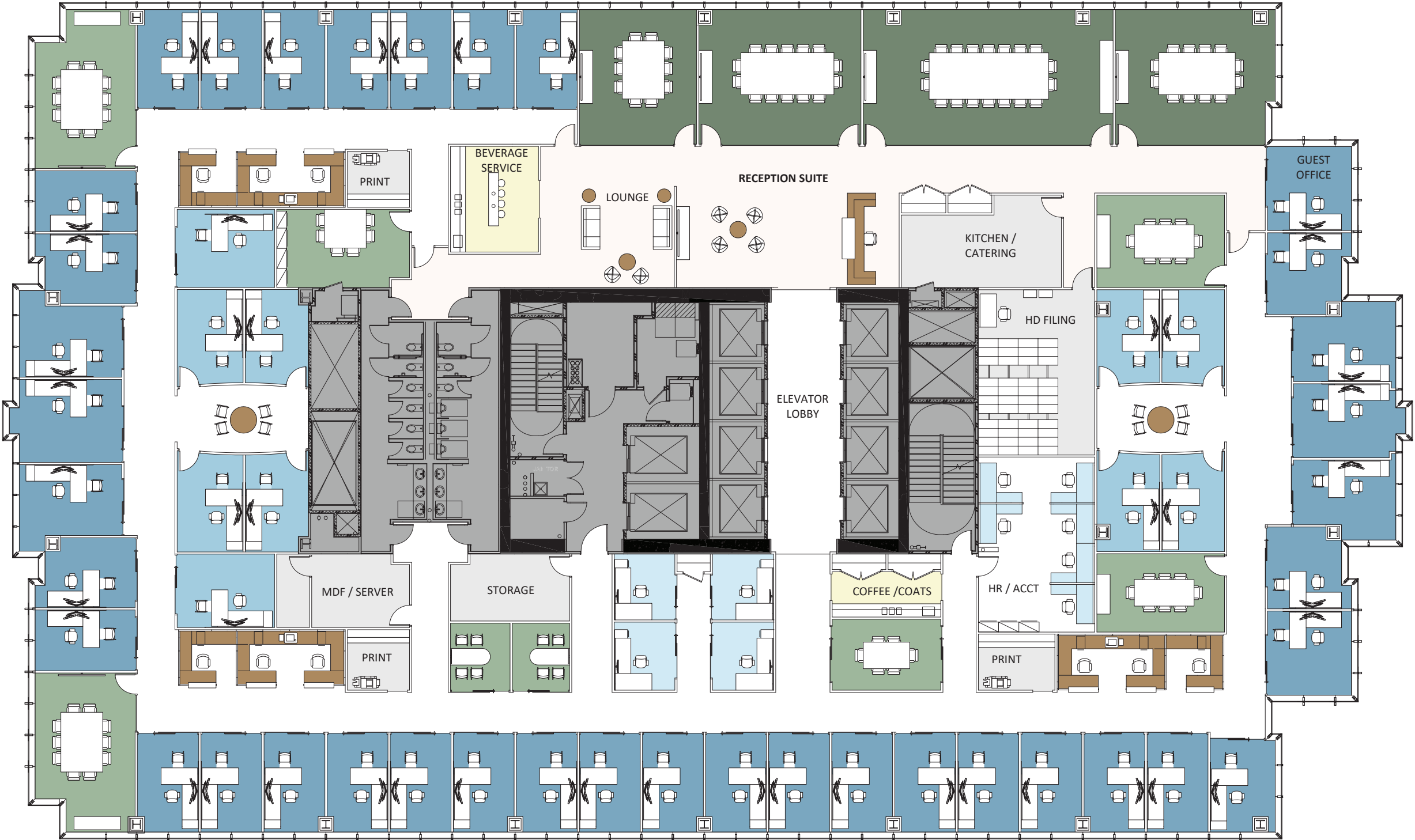
Chicago, Illinois

LAW FIRM

CONFERENCE FLOOR (25-50k RSF)

UNIVERSAL OFFICES

SPACE PROGRAM			
PEOPLE			
Associate / window	150 sf	39	
Associate / interior	150 sf	6	
Support offices	100 sf	4	
Assistant stations	72 sf	9	
Support stations	36 sf	6	
Misc (reception, etc)	36 sf	1	
TOTAL PEOPLE:		65	
CONFERCING			
10-person conference rooms		3	
8-person conference rooms		1	
6-person conference rooms		2	
4-person conference rooms		2	
Open collaboration araes		2	
CONFERENCE AREAS:		10	
SUPPORT			
HD Filing	425 sf	1	
Storage	200 sf	1	
Copy / Mail room	200 sf	1	
Cafeteria	400 sf	1	
Kitchen / Catering	280 sf	1	
Print stations	100 sf	3	
Wellness room	90 sf	1	
MDF room	220 sf	1	
SUPPORT AREAS:		10	
RECEPTION SUITE			
Reception area		1	
Guest lounge / beverage service		1	
20-person conference rooms		1	
14-person conference room		1	
12-person conference room		1	
10-person conference room		1	
Catering / food service		1	
Coat closet		1	



Salesforce Tower

Chicago, Illinois

LAW FIRM
TYPICAL ATTORNEY FLOOR
UNIVERSAL OFFICES

SPACE PROGRAM			
PEOPLE			
Associate / window	150 sf	50	
Associate / interior	150 sf	14	
Support offices:	100 sf	4	
Assistant stations	72 sf	12	
Support stations	36 sf	6	
TOTAL PEOPLE:		86	
CONFERENCING			
10-person conference rooms		2	
8-person conference rooms		2	
6-person conference rooms		3	
4-person conference rooms		2	
Open collaboration areas		3	
CONFERENCE AREAS:		12	
SUPPORT			
HD Filing	400 sf	1	
Mail / Copy	150 sf	1	
Storage	200 sf	1	
Cafeteria	400 sf	1	
Coffee	130 sf	1	
Print stations	100 sf	4	
Wellness room	100 sf	1	
IDF room	60 sf	1	
SUPPORT AREAS:		11	

SPACE METRICS (floor)	
Floor RSF	25,635
RSF / Attorney (window)	513
RSF / Attorney (total)	401
RSF / Employee	298
Minimum primary aisle	6 feet

